

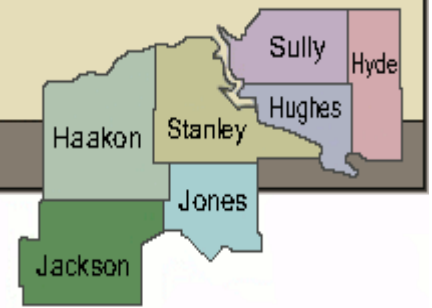
Central South Dakota Enhancement District

“Assisting Communities, Businesses and Individuals in Achieving Their Highest Economic Potential”

Volume 3, Issue 3
Fall, 2009

www.csded.org

PO Box 220, 3431 Airport Road, Suite 3
Pierre, South Dakota 57501



Energy Assistance Grants

Energy Efficiency and Conservation Block Grant Program applications are currently being accepted by the State for the approximately \$5.6 million available to cities and counties that did not receive a direct allocation from the federal government under the American Recovery and Reinvestment Act. This means within the Central SD Enhancement District service area for this program all counties and communities with the exception of the City of Pierre are eligible to apply. All grant applications must be submitted via a planning district and the CSDED service area for this program will also include not only our seven county area, but the counties and cities of Corson, Dewey, and Ziebach. A letter detailing all information needed for the applications was sent to County Auditor's/County Commissioners and City officials/Finance Officers in early November.

Eligible projects are those which will increase energy efficiency and reduce energy costs. This program changes from time to time so please be aware that staff will be asking for additional information as applications are being prepared.

2010 Governor's Conference on Tourism Scheduled for Jan 20-21 *Destination 2010 and Beyond*

Want to learn more about the tourism industry. Matt Roloff, of TLC's "Little People, Big People" will be the keynote speaker at the 2010 Governor's Conference on Tourism. Roloff will share his vision of the value that the tourism industry brings into communities both large and small. The Conference will be held January 20 and 21 at the Ramkota, Pierre.

Continue Next Column

Other topics include Online Marketing Success, Workforce Development, Generations in the Workplace and the Marketplace-Managing the Mix, Starting an Agritourism Business, Events Marketing, etc.

Early bird registration is due January 6. One day registrations are available. Registration can be made on-line at www.SDVisit.com with a credit card.

CSDED Office Moves

The District moved to a new location in late October and is now located at 3431 Airport Road, Suite 3 in Pierre.

Mail can be addressed to PO Box 220 or 3431 Airport Road, Suite 3. The telephone and fax numbers remain the same as do e-mail and web site addresses.

USDA Forum on Rural Jobs and Economic Growth

The US Department of Ag has scheduled a Forum on Rural Jobs and Economic Growth for 10 a.m. Wednesday, January 6 at the Harry Stern and Ella Stern Cultural Center located at the North Dakota State College of Science in Wahpeton, ND. The forum is scheduled to last approximately 2 hours and will feature a six-person panel to discuss issues on renewable energy, labor, lending and capital, small business/manufacturing, healthcare, and Native American Workforce/Economic Development.

The forum is being hosted by the North Dakota, South Dakota and Minnesota offices of USDA Rural Development and the Farm Service Agency. RSVP to tammi.schone@sd.usda.gov to confirm your attendance. Include your name, organization and a phone number.

"Grant Funds Awarded"

Fort Pierre



The City of Fort Pierre has been awarded \$2,000 of National Historic Preservation Funds by the National Trust for Historic Preservation to assist with consultant fees for the Cedar Hill Cemetery Survey/Monument System Project. The purpose of the project is to hire a surveyor/contractor to map out the cemetery utilizing a corner monument grid system network, mark and place corner monuments with new numbered aluminum caps, and create a system that enables researchers and the general public to locate burial plots with relative ease. This is a 50/50 grant.

Kadoka

Kadoka has been awarded \$6,000 from the SD Department of Water and Natural Resources toward an engineering study to determine storm water drainage needs.

District staff assisted with these applications. If you are interested in learning more about project financing options for projects, please contact the CSDED office.

CSDED

The District applied for and received an award from the US Census Bureau Partnership Program for pens and pencils in order to increase awareness of the 2010 Census. These were given to Stanley County, Sully County, and the City of Murdo to distribute to members of their county/community to promote the Census.

EMS Services Grants Available

The SDML Workers' Compensation Fund has funds available to grant to EMS services that have their workers' compensation coverage through the PRO ambulance cots and/or Stryker Stair-PRO tracked chairs. Funds are being disbursed on a 60/40 matching basis with the SDML WC providing 40% of the funds. Application must be received or postmarked by December 31, 2009. Applications will also be accepted electronically. Contact Karen Ripperda at Karen@SDMLWCFund.com for more information.

SD Department of Transportation Enhancement Program

Transportation Enhancement (TE) activities are federally funded, community based projects that enhance the transportation system through preservation of visual and cultural resources and that improve the quality of life for South Dakota citizens. TE projects must have a link to the transportation system and be one of the 12 eligible activities as listed below:

1. Provision of facilities for pedestrians and bicycles.
2. Provision of safety and educational activities for pedestrians and bicyclists.
3. Acquisition of scenic easements and scenic or historic sites.
4. Scenic or historic highway programs (including the provision of tourist and welcome center facilities).
5. Landscaping and other scenic beautification.
6. Historic preservation.
7. Rehabilitation and operation of historic transportation buildings, structures, or facilities (including historic railroad facilities and canals).
8. Preservation of abandoned railway corridors (including the conversion and use thereof for pedestrian or bicycle trails).
9. Control and removal of outdoor advertising.
10. Archaeological planning and research.
11. Environmental mitigation to address water pollution due to highway runoff or reduce vehicle-caused wildlife mortality while maintaining habitat connectivity.
12. Establishment of transportation museums.

Applications are due February 1st of each year. Successful applicant's TE projects are then programmed in the Statewide Transportation Improvement Program (STIP).

The Transportation Enhancement Program guide outlines the requirements of this program. More information can also be found at www.enhancements.org.



Happy Holidays!

Dates and Deadlines

December 24-25—Christmas, CSDED Office Closed
 January 1—New Years, CSDED Office Closed
 February 3—Municipal Day at the Legislature
 15—President’s Day, CSDED Office Closed
 22—County Day at the Legislature

SDDENR Water, Sewer, and Storm Sewer Project Financing Application Deadlines:

- Consolidated Water Facility Construction Program
Deadlines are the 1st day of April, July, October and January
- Clean Water and Drinking Water SRF Loan Programs Deadlines are currently the 15th day of April, July, October and January

SDDENR Solid Waste Management Financing Program
 Deadlines are the 1st day of April, July, October and January.

Urban & Community Forestry Comprehensive Challenge Sub-grant

Through the Urban & Community Forestry Program, the SD Department of Agriculture has provided financial assistance to our communities each year since 1991. A portion of the division’s annual allocation of Urban and Community Forestry Assistance funds from the US Forest Service is awarded to communities in the form of Challenge grants. These grants are used to fund community forestry projects which solve a specific community forestry problem, demonstrate the importance of trees in our communities. The community or service organization must match challenge grants.

The Division has developed the challenge grant program to require increased commitment and effort from a community. The criteria for the challenge grant are outlined below: *(listed highest to lowest priority)*

- Professional Services – (\$5000)
- Tree Inventory/Assessment – (\$5000)
- Existing Tree Care & Maintenance – (\$5000)
- Education/Training – (\$5000)
- New Tree Planting – (\$1000) - *An applicant may only receive a maximum of \$1000 per year for new tree plantings.*
- Other Activities – (\$5000)

Grants have a maximum limit of \$5000. The required match may be met through volunteer labor, donated and/or purchased supplies, or actual cash expenditures.

Grant applications will be accepted at any time during the year. Application forms are available from the state office and field service offices of the Division Resource Conservation and Forestry.

Directors Notes!

We are about to see the CSDED staff change once again. Luke Miller joined the staff in October and has been working on GIS for Jackson County, Census information, Governor’s House, CDBG Survey Development, helping with Energy Grants. Luke has been offered a full scholarship and assistantship to graduate school. Thus, Luke will be leaving us in December. This is an excellent opportunity for Luke and we wish him the best of luck. Alfred Haugen will be joining the CSDED staff in late December as a planner and will be assigned the duties that Luke has been accomplishing



We were also sorry to see Gladys Nye leaving her position with the District. Gladys is now retired but is keeping busy with quilting and taking care of her husband, plus I am sure a few volunteer activities and playing Wii bowling with the ladies in her apartment complex.

The staff (Seth) has just completed a comprehensive plan for Philip and the staff should be completed with the comprehensive plan, zoning and other ordinance updates for Onida by the end of December. Ordinances are being revised for Midland and personnel policy recommendations for Jackson County. Administration activities continue for infrastructure projects in Agar and Philip which should be completed in early 2010, plus those for Harrold, Mid-Dakota Rural Water System, Pierre, Fort Pierre, and McLaughlin (2). December will also find the staff completing EDA reports and various other funding agency reports as well, plus the 12 to 15 Energy Grant applications that are being worked on.

Certified Ready Sites—More Info to Come in Next Newsletter

Governor’s House Program

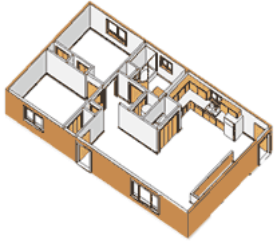
The Governor’s House Program has been in existence since 1996 and houses are available for purchase by private individuals as their primary residents and by non-profits. **Now may be the time to purchase to take advantage of tax credits—order by mid-February.** This 2-bedroom, 1 bath home 1,008 square feet energy efficient home comes complete with kitchen cupboards, bathroom fixtures, a furnace, hot water heater, and washer and dryer hook-ups. The house does not come with appliances or floor coverings.

Purchaser is responsible for financing the house like any other house one might purchase. The purchaser is responsible for all costs including house, lot/land, foundation/basement, floor coverings, appliances, entrance steps, utility connections and hook-up fees, building permit, sidewalks, driveway, and curb and gutter as applicable.

INCOME QUALIFICATIONS APPLY!

To learn more about the Governor’s House Program or if you know of someone who might want to purchase the home, please have them contact Marlene at the CSDED Office at 773-2782 or go to the District website at www.csded.org.

Photos and house layout from SDHDA website



CSDED Officers/Executive Committee

Vikki, Day, Chairman, Highmore
 Bill Abernathy, Vice-Chairman, Pierre
 David Page, Sec/Treasurer, Fort Pierre
 David Neuharth, Stanley County
 Monte Anker, Jones County

CSDED Staff

Marlene Knutson, Executive Director
 605-773-2782
mknutson@csded.org

Luke Miller, Planner
 605-773-2785
luke@csded.org

Seth Hyberger, Disaster Coordinator
 605-773-2781
seth@csded.org

Central South Dakota



Enhancement District

PO Box 220
 3431 Airport Road, Suite 3
 Pierre, South Dakota 57501