

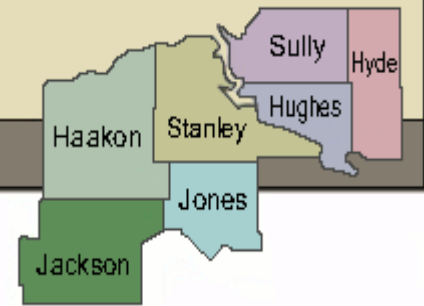
Central South Dakota Enhancement District

“Assisting Communities, Businesses and Individuals in Achieving Their Highest Economic Potential”

Volume 4, Issue 3
September, 2010

www.csded.org

PO Box 220, 3431 Airport Road, Suite 3
Pierre, South Dakota 57501



SDHDA Reduces Interest Rates for First-time Homebuyers

The interest rates for First-time Homebuyer Loans through South Dakota Housing Development Authority (SDHDA) have recently been reduced. The interest rate for starting Step Rate loans is now 2.75 percent, Fixed Rate loans were reduced to 3.75 percent and the Fixed Rate Plus Option was reduced to 4.25 percent. The rates are the lowest in the history of SDHDA.

SDHDA's Fixed Rate Plus option provides cash assistance for down payment and closing costs of up to 3 percent of loan amounts. SDHDA's Step Rate starts at 2.75 percent and increases one-half percent each year for four years. The rate beginning in the fifth year is 4.75 percent and remains at that level for the balance of the 30-year term.

Income limits and purchase price limits vary by county. Applicants must be first-time homebuyers to qualify. For more information, First-time Homebuyers should contact one of SDHDA's Participating Lenders. Interest rates, income limits, qualifications and list of participating lenders can be found on SDHDA's website at www.sdhda.org.

SDDOT Reviewing Non-Metropolitan Local Officials Consultation Process

The SDDOT is reviewing its Non-metropolitan Local Officials Consultation Process. The Department established the process to provide local officials with an opportunity to participate in the development of SD Transportation plans and program. For a copy of the Planning Process contact the District or go to www.csded.org. Comments on the process can be submitted until November 30, 2010 to Jerry Ortbahn, SDDOT, 700 E Boardway Ave, Pierre, SD 57501.

Upcoming Events/Deadlines

October, 2010

Columbus Day/Native American Day
October 11—Office Closed

CSDED Annual CEDS Survey Deadline
October 14

SD Municipal League—Rapid City
October 5-8

SD Planner's Association Conference
October 27 & 28, Pierre

BOSDRC Grant Applications Deadline October
31

November, 2010

SDHDA Housing Conference
November 9-10, Pierre



Veterans Day—Office Closed
November 11

Thanksgiving Holiday
November 25 & 26

December, 2010

CSDED Board Meeting
Thursday – December 11, 2010
1:30 p.m. CSDED Board Room, Pierre

Christmas Holiday December 24 and New Years,
December 31—Office Closed

SDDENR Applications for Water, Wastewater,
and Storm Drainage Grant and Loan Funds due
January 1 (December 30), then April 1, July 1, &
October 1.

"Grant Funds Awarded"



Philip

Philip has been awarded a \$14,000 Small Community Planning Grant from SDDENR for storm drainage and wastewater engineering studies.

Kadoka

Kadoka has been reserved \$142,000 of Community Development Block Grant Funds which will enable the Kadoka Nursing Home to install an automatic sprinkler system to meet federally mandated fire safety requirements for long-term care facilities. The total project is estimated at \$242,000.

Midland

Midland has been awarded \$11,400 of FEMA Hazard-Mitigation grant funds for a permanent back-up generator for the town's Wastewater Lagoon. The total project is estimated at \$15,200.

District staff assisted with these applications. If you are interested in learning more about project financing options for one of your projects, please contact the CSDED office.

South Dakota State Historical Society's Deadwood Fund Program

There are two opportunities to apply for funding annually. The first deadline is February 1 and the second is October 1. Projects may not start until after the award is granted. Under this historic preservation program, grants ranging from \$1,000 to \$25,000 can be awarded for projects that retain, restore, or rehabilitate historic buildings, structures, and archaeological sites in South Dakota for residential, commercial, or public purposes. For more information contact the CSDED office or the State Historic Preservation Office.

SD Housing Conference

The Annual SD Housing Conference, sponsored by South Dakota Housing Development Authority is scheduled for November 9-10, 2010 in Pierre.

Key note speakers include:

- Dr. Randall Waldron, Associate Professor of Economics at USD. Dr. Waldon will be discussing the Impact of Housing on the Economy.
- Jan Johnson, motivational speaker, will discuss how we can positively IMPACT another person's life.
- Dr. Donna Beegle, author and researcher, will discuss Poverty 101. Through sharing her journey out of "generational poverty," Dr. Beegle will describe how our class/diverse cultural experiences "program" us with values and expectations that shape our abilities to relate and communicate across socio-cultural barriers.

For a complete copy of the program and to register go online to www.sdhda.org. Registration is \$150 on or before October 26 and \$175 after October 26.

BOSDRRC Grants Due October 31/

The SD Department of Agriculture is accepting grant applications from 4-H Clubs, FFA Chapters and Family Career and Community Leaders of America (FCCLA Chapters) via the Building Our South Dakota Rural Communities (BOSDRRC) program. The Basic grant is used for community improvement projects and is limited to \$750 per project, however this is a great way for youth to be involved in community projects at parks, fairgrounds, main street, etc. Applications are available on the SD Dept of Ag web site or by calling 773-5436.

October 27-28

SD Planners Conference Scheduled

The SD Planners Conference is scheduled for October 27-28 in Pierre. The feature presenter will be nationally recognized land use lawyer, planner and author Dwight Merriam FAICP. Topics include:

- First Amendment in Land Use
- How to Conduct a Good Public Hearing
- How federal housing policies and law may affect the implementation of local government zoning ordinances
- Dealing with Pipeline and Utility Corridor Ordinances
- Taking Issues
- Rural Subdivision Road Responsibility, Regulations and Road Districts

Registration is \$80 for SDPA members, \$100 for non-SDPA members and \$70 for students. Registration is due October 22. A complete agenda is available at www.sdplanners.com. The CSDED encourages planning commission members and zoning administrators to attend.

Directors Notes!



The CSDED is currently in the process of doing our annual survey to assist in the annual updating of the District's Comprehensive Economic Development Strategy (CEDs). The survey was mailed and e-mailed out last week, or one can go to the District web site at www.csded.org to complete the survey. I ask that the survey be completed and returned by October 14. The survey helps determined where our work activities should focus. Thank You for your assistance in completing the survey.

Redistricting—The census information for redistricting purposes should be available sometime between February and March. If your community/county needs assistance in the

redistricting process, please contact AI at the District as the CSDED can utilize ArcGIS to help draw various alternative boundaries for voting district purposes. This will help you analyze population densities, housing, race, etc. This will be provided at no-cost to our members as long as it does not take your unit of government more than 16 hours of staff time.

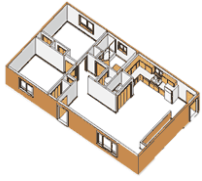
EDA Planning Grant—The EDA Planning Grant application information was submitted and while the District has normally been able to match this on an 80/20 rate, it is now a 50/50 rate for next year. This is due to Per Capita Income Figures—see table below.

Tourism Conference—The 2011 SD Governor's Tourism Conference is scheduled for January 19-20 in Pierre.

Per Capita Personal Income									
	1999	% of USA	2006	% of USA	2007	% of USA	2008	% of USA	% Change 2007-2008
Haakon	\$ 31,583	111%	\$40,799	108%	\$46,288	118%	58,419	145%	26%
Hughes	\$ 26,087	92%	\$37,032	98%	\$38,795	98%	41,679	104%	7%
Hyde	\$ 24,019	85%	\$26,563	70%	\$36,551	93%	42,932	107%	17%
Jackson	\$ 16,104	57%	\$20,267	54%	\$22,436	57%	30,398	76%	35%
Jones	\$ 26,765	94%	\$30,261	80%	\$40,560	103%	50,270	125%	24%
Stanley	\$ 27,962	99%	\$34,969	93%	\$39,571	100%	46,602	116%	18%
Sully	\$ 43,838	155%	\$35,810	95%	\$64,350	163%	95,764	238%	49%
SD	\$ 24,816	88%	\$33,718	89%	\$36,428	92%	38,644	96%	6%
USA	\$ 28,333		\$37,698		\$39,392		40,166		2%

Source: www.bea.gov Bureau of Economic Analysis

Governor’s House Program



To learn more about the Governor’s House Program or if you know of someone who might want to purchase the home, please have them contact Marlene or Al at the CSDED Office or go to the District website at www.csded.org

CSDED Officers/Executive Committee

Vikki, Day, Chairman, Highmore
Bill Abernathy, Vice-Chairman, Pierre
Jamie Huizenga, Sec/Treasurer, Pierre
David Neuharth, Stanley County
Monte Anker, Jones County

The CSDED newsletter pertains to items of interest to CSDED members and those we serve. This newsletter is funded in part by the Economic Development Administration, US Department of Commerce.

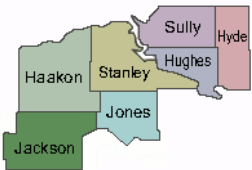
CSDED Staff

Marlene Knutson, Executive Director
605-773-2782
mknutson@csded.org

Al Haugen, Planner
605-773-2785
alfred@csded.org

Seth Hyberger, Planner
605-773-2781
seth@csded.org

CDBG DEADLINES To Be Implemented—Starting next year there will be quarterly deadlines of March 15, June 15, Sept, 15 & December 15.



Central South Dakota
Enhancement District
PO Box 220
3431 Airport Road, Suite 3
Pierre, South Dakota 57501