

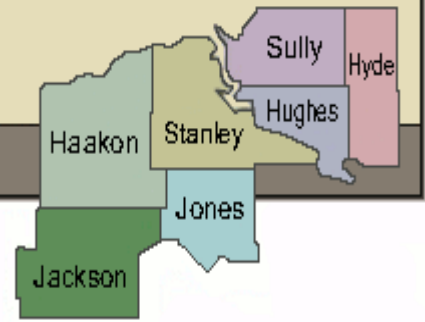
Central South Dakota Enhancement District

“Assisting Communities, Businesses and Individuals in Achieving Their Highest Economic Potential”

Volume 2, Issue 1
Winter January, 2008

www.csded.org

PO Box 220, 110 West Missouri
Pierre, South Dakota 57501



Launch 08—Building the Entrepreneurialship Atmosphere

The South Dakota Entrepreneurship Education Conference: Launch '08 will be held on Thursday, February 28 at Dakota Wesleyan University in Mitchell.

Launch '08 is a one-day event advancing entrepreneurship education in South Dakota. The 2008 annual conference features two tracks. The **Educator Track** is geared towards those who are interested in integrating innovative and creative thinking within their respective disciplines. The **Student Track** is geared towards inspiring and supporting students that are entrepreneurial. The conference will also feature networking opportunities and relevant resources for entrepreneurs.

This year's conference speakers include: **Ed Sobey**, Ph.D., global evangelist for creative learning and founding Director of the Northwest Invention Center, The National Inventors Hall of Fame and the National Toy Hall of Fame; **Kathleen R. Allen**, Ph.D., a nationally recognized consultant, speaker and author of numerous books on entrepreneurship, as well as, the Director of the University of Southern California Marshall Center for Technology Commercialization; and **Timothy M. Stearns**, Ph.D., holder of the Coleman Foundation Chair in Entrepreneurial Studies and the executive director of the Lyles Center for Innovation and Entrepreneurship at California State University-Fresno.

Up to 40 stipends worth \$1,000 each are being offered to educators that integrate entrepreneurship into their classroom curriculum. The stipends which are available to all full-time educators at the high school, technical, or university level, are being provided by SD EPSCoR(Experimental Program to Stimulate Competitive Research) to promote an entrepreneurial atmosphere in South Dakota. In order to receive the stipend, applicants must attend Launch 08. Find more information on www.dwu.edu/sdlaunchconference/index.htm or www.sdepscor.org.

Dates and Deadlines



- Feb. 1-State Water Plan Applications Due (May 1 and August 1 are the next Deadlines)
1-State Deadwood Fund Applications Due (October 1 is the next Deadline)
5-Municipal Government Day at Legislature
14-CSDED Board Meeting, 2 p.m. CST
Stanley County Courthouse, Fort Pierre
18-President's Day, CSDED Office Closed
19 & 20-SD Transportation Safety Conference, Pierre
21-Low Cost Highway Safety Improvements Workshop, Pierre
28-Entrepreneurship Education Conference, Mitchell
April 8-9-Governor's Economic Development Conference, Pierre
10-District 8 Municipal League Meeting, Kadoka
17-District 5 Municipal League Meeting, Miller

SDDENR Water, Sewer, and Storm Sewer Project Financing Application Deadlines:

- 1) Consolidated Water Facility Construction Program Deadlines are the 1st day of April, July, October and January
- 2) Clean Water and Drinking Water SRF Loan Programs Deadlines are the 15th day of April, July, October and January

SDDENR Solid Waste Management Financing Program
Deadlines are the 1st day of April, July, October and January.

Capitol University Center to Get New Home

Ron Woodburn, Capitol University Center Executive Director, gave an overview of the proposed 18,000 square foot, two story building for CUC at the January 10, 2008, CSDED board meeting. The facility will hold six classrooms, including a 75-seat theater-style classroom. While a large share of the construction dollars are coming from private donations, it is hoped the SD Legislature will also provide some funds toward this estimated \$3.5 million project, according to Woodburn. The new home of CUC will be known as the Wallace R Halverson Education Center.

CUC was incorporated in 1982. Students, most of whom are non-traditional, can expand their educational experience by earning certificates, associate degrees, bachelor degrees, and master degrees in various program areas from nursing to management information systems to business administration. Classes at CUC are offered as part of other SD University Programs including Northern State University, Black Hills State University, University of South Dakota, Dakota State University, South Dakota State University, etc.

As there is no university located in the CSDED area, CUC provides an important way for area residents to continue their education and for our businesses to have qualified employees. For example, 32 clinics, hospitals and nursing homes in central South Dakota have employed graduates of the nursing program.

2007 Census of Ag Underway

Conducted every five years by the US Department of Agriculture, the 2007 Census is a complete count of America's farms and ranches and the people who operate them. The Census looks at land use and ownership, operator characteristics, production practices, income and expenditures and other topics. Completed forms are due February 4.

The information gathered is used by policy-makers concerning the development and rules for ag and rural programs. While community planners might use it to target needed services to rural residents, private companies might utilize the information to determine where to locate and/or expand a business.

Grant Funds Awarded

Agar has been awarded \$500 from Montana Dakota Utilities to assist the community with a community clean-up and tree planting project in the park.

Haakon County has been awarded \$31,734 of Highway Safety Project Grant funds to assist them in purchasing and placing 911 Rural Address Signs. This is an 80/20 grant.

Harrold has been awarded a \$200,000 Community Development Block Grant to assist them with a \$400,000 Storm Water Drainage Project.

District staff assisted with these applications. If you are interested in learning more about project financing options for projects, please contact the CSDED office.

Director's Notes

As most of you are aware, Elizabeth Heath is no longer working for the Central South Dakota Enhancement District as she decided to be a stay-at-home mom effective December 1. While her assistance is missed, especially in the area of marketing the Governor's House, the search for a new administrative assistant has begun.



SD Department of Transportation budget short-fall is affecting local economic and community road projects as no city and county projects are being funded from SDDOT Community Access, Industrial Park and Agri-Business grant programs for FY 2008 funds. It is the intent of SDDOT to accept application again August 1, 2008 for FY 2009 funds. If you plan to apply for Main Street Improvement and Industrial Park road projects, you should plan now in order to meet the August 1 deadline as engineering reports with cost estimates and cross-sectional drawings are needed for the application.

The Joint Powers Agreement/bylaws have been updated and have been e-mailed to all board members and county's and city's who are members. There are really no major changes, but helps clean-up some language that was not clear. These were approved by the Board of Directors at the January 10 meeting. Member units of governments can sign and return these as you wish. 2008 dues have been received from all seven counties and the communities of Agar, Midland, Harrold, Blunt, Murdo, Onida, Highmore, Philip, Fort Pierre, and Pierre. District staff thanks you for your continued support. We look forward to a successful 2008.

Surplus Property Available

SD Property Management offers equipment and merchandise with usable life and value at a reduced cost to county, municipal, township, and state tribal governments. On their web site: www.sdsurplusproperty.com you'll find an ever-changing surplus listing of vehicles, equipment, office furniture, and many miscellaneous items for sale at appraised prices.

Presently, these items are available without pre-registering to purchase. However, PREREGISTRATION WILL BE REQUIRED after February 1, 2008. From then forward, a login ID and password will be required for the ability to purchase. To pre-register go to www.sdsurplusproperty.com and click on "Website for Political Subdivisions." The following information will be required:

- Political Subdivision Entity
- Contact Name
- Telephone
- Billing Address
- County
- Taxpayer Identification Number

Each organization will be allowed a maximum of 2 contacts to be registered to enter the site. This will be based on your Taxpayer ID number. After your application is accepted, a login ID and password will be emailed to you.

For information contact SD Property Management at 605-773-4935 or boasurplusproperty@state.sd.us

Forestry Grant Funds Available

Challenge Grant Funds are available from the SD Department of Agriculture, Division of Resource Conservation and Forestry to promote community forestry projects that solve specific community forestry problem. Assistance is targeted to communities that would like to start a community forestry program, take care of existing trees in their community, learn more about tree care and maintenance, do a community tree inventory, and plant new trees.

Projects must be on public lands or in public right of ways, will require a 50/50 match, and require professional advice from the Division of Resource Conservation & Forestry (RCF). The match in some instances may be in-kind labor. For Information contact Chris Johnson at the SD Department of Ag at 1-800-228-5254. The applications forms are on the states website:

<http://www.state.sd.us/doa/Forestry/grantsandloans/uandcf.htm>. There are no application deadlines.

February 19 & 20

Transportation Safety & Our Youth Conference Scheduled

The SD Department of Transportation is accepting registration for a two day conference—February 19 & 20-- geared toward Transportation Safety and Our Youth. Topics include, but are not limited to, Safe Routes to Schools, Funding Sources for Highway Safety Projects, Occupant Protection, Impaired and Distracted Driving by our Youth, Motorcycle Safety, Work Zone Safety and the new Federal Rule, Safety Issues on our Indian Reservations. Cost for the conference is \$30/person if preregistered by January 31, 2008 or \$40 at the conference.

Contact Cliff Reuer, SDDOT at 773-5361 to register or for more information.

Safety Improvements Workshop

The next day-February 21--the SD Municipal League is sponsoring a Low Cost Safety Improvements Workshop geared toward local traffic engineers, county highway superintendents, city street superintendents, township officials and planners. Workshop participants will be able to identify low cost safety improvements that can be applied to high crash locations. Contact Sharon Johnson, Safety & Traffic Engineer, FHWA, at 605-224-7325, ext 3041.

Loading, Securing & Transporting Mobile Equipment Workshop

The AGC of SD Building Chapter and the SD Trucking Association is sponsoring a half day workshop on the appropriate securement techniques for a variety of common loads and the proper use chain, rope, webbing straps and other load securing devices. In addition, the SD Highway Patrol will discuss the Federal Motor Carrier Safety Regulations regarding transporting mobile equipment. Information regarding city statutes and ordinances regarding the area around construction sites will also be given. The workshop is scheduled for 8:00 a.m. February 14 in Rapid City and will be repeated February 28 in Aberdeen. There is a registration fee and pre-registration is required, Contact the AGC of SD for more information or to register at 605-336-9338.

Art Opportunity Funds

South Dakota Arts Council has several grant programs available to assist organization and schools enhance art opportunities and education for South Dakota residents. For more details contact the SD Arts Council at 773-3301. Application forms are on the state website:

<http://www.artscouncil.sd.gov/guide/orgsandschools.asp>

Only paper printed forms are accepted.

[Arts Challenge Grants](#) are offered on a competitive basis with application review criteria based on the long-range planning goals of the South Dakota Arts Council. The state's eligible arts agencies are challenged to commit to these goals for statewide arts development through the funding program. Among other criteria, the agency must be nonprofit and have a minimum eligible cash operating expense of \$35,000 for the most recently completed fiscal year. **DEADLINE: March 1, 2009**

[Artists in Schools and Communities Residency](#) provides schools and other South Dakota nonprofit organizations the opportunity to use professional artists to supplement the arts in their curriculum and communities. Information is located in the **DEADLINE: April 1, 2008**

[Excursion Grant Program](#) provides matching funds to South Dakota organizations to assist in transportation costs for taking K-12 students and persons with disabilities to programs co-sponsored by the South Dakota Arts Council in another town. **DEADLINE: 15 days prior to activity-- Please contact SDAC office before applying.)**

[Importation of Musicians](#) is designed to enable South Dakota orchestras to import musicians that are not available within their own community to improve the quality of a performance season. **DEADLINE: March 1**

[Project Grants](#) assist South Dakota nonprofit organizations in the presentation of an activity or series of activities for the general public, in any arts discipline, which meet specific needs of the applicant organization.

DEADLINE: March 1, 2008

[Performing Arts Bank](#) is a partnership program of South Dakotans for the Arts and the South Dakota Arts Council. As an underwriting service for South Dakota communities with populations under 15,000, the Performing Arts Bank insures against financial loss in producing and sponsoring performances, workshops and other performing arts events without removing the community effort required to support the event. Funds are only used if a presenter suffers a deficit at the box office. **DEADLINE: 30 days prior to activity**

[Small Organization Season Support Grants \(SOSS\)](#) new in FY 09 this grant assists small nonprofit arts organizations in presenting a season of activities in any arts disciplines that serve the general public and meet specific needs of the applicant organization. Grants will be awarded for a two-year period. Recipients will receive the same award for two consecutive years. **DEADLINE: March 1, 2009**

[Statewide Services Program](#) funds statewide cultural service organizations through a partnership agreement with the South Dakota Arts. Grants are made to help meet the mission, goals, and strategies of the Council's long-range plan. **DEADLINE: March 1, 2009**

What is the Main Street Approach?

Kevin Kuchenbecker of the Deadwood Historic Preservation Office discussed the "four point approach" for revitalizing a downtown according to the Main Street Program at the November 9, 2007 meeting of the CSDED board. The Main Street Four-Point Approach is a methodology used to revitalize traditional commercial districts based upon a comprehensive strategy of work, tailored to meet local needs and opportunities. Local individuals work to implement projects in four key areas:

Organization: Building consensus and cooperation among public and private groups and individuals, and identifying sources of funding for revitalization activities.

Design: Enhancing the district's physical appearance through building rehabilitation, compatible new construction, public improvements, and design management systems. This is basically enhancing the visual quality of the downtown—buildings, signs, window displays, landscaping.

Promotion: Marketing the commercial district through events and advertising to attract customers, potential investors, new businesses, residents, and visitors. Make your downtown a hub of social activity.

Economic Restructuring: Strengthening the district's economic base and creating new opportunities through analysis and mixed-use development.

The Main Street Approach was developed by the National Trust for Historic Preservation's National Main Street Center with the goal of economic development within the context of historic preservation.

For more information on the concept contact the CSDED District staff.

News Briefs:

Oahe Days Arts Festival, which is scheduled for June 20-22, in Pierre has been selected by the Office of Tourism for the 2008 Great Events Campaign. Selection is based on visitor appeal, growth potential and length of the event.

Planning a new tourism event for 2009 and need help with marketing dollars, check out the **Million Dollar Challenge Program** from the SD Department of Tourism.

Parcel Mapping---There are a variety of uses for a parcel map including planning and zoning, automating the tax process, creating address point locators, creating road right of ways, etc. If a member county is interested in undertaking such a project contact Justin at the CSDED office.

Travel Industry Economic Impact

Visitor spending in South Dakota in 2007 was approximately \$941 million, which is approximately 8.8% higher than 2006, according to a report entitled Statistical Update Economic and Fiscal Impacts Associated with the Vacation Travel Industry in South Dakota November 2006 through October 2007. The study was prepared by Dr. Michael Madden in January, 2008. This \$941 million in director visitor spending results in a total state economic impact of about \$2,352,000,000 according to the study.

Visitor spending is based upon a methodology related to lodging, food and beverages, attractions, and various costs like gas. CSDED County data is listed below as taken from the study.

Estimated Total Visitor Sales Volume and Percent Change								
	Haakon	Hughes	Hyde	Jackson	Jones	Stanley	Sully	South Dakota
2000	\$ 924,114	\$ 12,103,326	\$ 364,204	\$ 7,243,010	\$ 5,375,751	\$ 1,608,604	\$ 2,403,437	\$ 624,469,235
2001	\$ 835,275	\$ 13,353,306	\$ 374,251	\$ 6,467,501	\$ 5,150,585	\$ 2,123,754	\$ 2,961,126	\$ 601,281,558
2002	\$ 767,005	\$ 13,795,291	\$ 315,572	\$ 6,955,203	\$ 5,704,126	\$ 2,207,621	\$ 2,238,514	\$ 662,860,933
2003	\$ 720,130	\$ 14,400,302	\$ 377,553	\$ 7,720,572	\$ 5,269,183	\$ 2,152,248	\$ 2,182,459	\$ 697,971,635
2004	\$ 557,556	\$ 15,920,099	\$ 352,054	\$ 8,253,541	\$ 5,563,007	\$ 2,307,688	\$ 2,082,398	\$ 752,200,454
2005	\$ 540,328	\$ 15,401,272	\$ 327,819	\$ 8,443,807	\$ 6,124,528	\$ 2,504,149	\$ 2,082,039	\$ 809,402,850
2006	\$ 613,717	\$ 15,348,527	\$ 378,284	\$ 8,466,879	\$ 5,930,296	\$ 2,808,871	\$ 2,157,189	\$ 864,855,345
2007	\$ 773,161	\$ 18,697,665	\$ 349,637	\$ 8,870,329	\$ 6,397,247	\$ 2,667,006	\$ 2,195,335	\$ 941,057,935
%Chg 2006- 2007	26.0%	21.8%	-7.6%	4.8%	7.9%	-5.1%	1.80%	8.8%
% Ave Change 2000- 2007	-2.3%	7.8%	-0.6%	3.2%	2.7%	9.4%	-1.2%	7.2%

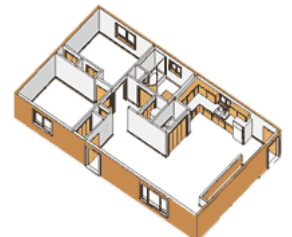
Governor's House Program

The Governor's House Program has been in existence since 1995, with more than 1,400 homes sold to private individuals and non-profits.

The house is 1,008 square feet and a new minor change in the design is the removal of the wall between the double closets in the master bedroom which should provide for more closet space.

Household income and net worth guidelines remain as follows.

- Households of 2 or less must have an income less than \$31,980
- Households of 3 or more must have an income less than \$37,310
- Households under 62 years of age must have a net worth less than \$90,000, of which no more than \$70,000 in liquid assets.
- Households over 62 years of age must have a net worth less than \$175,000, of which no more than \$100,000 in liquid assets.



To learn more about the Governor's House Program or if you know someone who might want to purchase the home, please have them contact Marlene or Justin at the CSDED Office at 773-2780.

Central South Dakota Enhancement District’s
Mission: Working together to improve the
quality of life within our region.

CSDED members and staff strive to create
wealth and lessen poverty from a “wholistic”
approach by promoting a favorable business
environment, while attracting private capital and
jobs through capacity-building, infrastructure
development, planning, research and strategic
initiatives.

The CSDED newsletter pertains to items of
interest to CSDED members and those we serve.
This newsletter is funded in part by the
Economic Development Administration.

CSDED Officers/Executive Committee

Vikki, Day, Chairman, Highmore
John Hart, Vice-Chairman, Philip
David Page, Secretary/Treasurer, Fort Pierre
David Neuharth, Stanley County
Monte Anker, Jones County

CSDED Staff

Marlene Knutson, Executive Director
605-773-2782
mknutson@csded.org

Justin Poile, Planner
605-773-2785
justin@csded.org

Central South Dakota
Enhancement District
PO Box 220 *110 W Missouri Ave
Pierre, South Dakota 57501

