

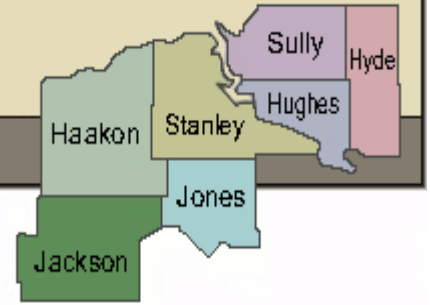
Central South Dakota Enhancement District

“Assisting Communities, Businesses and Individuals in Achieving Their Highest Economic Potential”

Volume 4, Issue 1
Winter, 2010

www.csded.org

PO Box 220, 3431 Airport Road, Suite 3
Pierre, South Dakota 57501



Energy Assistance Loans

Energy Efficiency Loan applications are being accepted by the State for the approximately \$2.8 million available to schools and community non-profits. These zero percent loan funds can be utilized to implement energy conservation measures. The term of the loan will be determined based on the simple payback of the activity not to exceed 10 years. Applications are due April 12.

Eligible projects are those which will increase energy efficiency. These are ARRA (stimulus funds). Therefore, Davis Bacon and Made in America rules will apply. Please contact Seth at the office if you would like more information or assistance with the application. Information can also be found at http://www.state.sd.us/boa/ose/OSE_Statewide_Energy.htm.

2010 Governor’s Economic Development Conference

Rolling Out The Red Carpet

The 2010 Governor’s Economic Development Conference will be held April 20 and 21 at the Ramkota, Sioux Falls. Note that this is a change in location from the usual conference site of Pierre. This year there will be both an economic development track and a business track. The conference will begin on the afternoon of the 20th and with a Gubernatorial Candidate Forum and Lunch on Wednesday the 21st.

The business track will include a discussion of the state’s participation in National Career Readiness Certificate Program. The economic development track will include such topics as community development preparing a site for economic development.

Continue Next Column

Early bird registration is due April 7. More information and registration can be made on-line at www.sdreadytopartner.com.

Ethanol Blender Pump Incentive Grant Program

The South Dakota Department of Tourism and State Development is accepting grant applications from motor fuel retailers for the Ethanol Blender Pump Incentive Program. Retailers can apply for up to \$10,000 per blender pump to help defray the cost of installing blender fuel pumps. Funds can only be used for dispenser and associated hardware, but not for storage tanks, or any other infrastructure from the tank to the pump.

A blender pump is a filling station fuel dispenser that allows consumers to select the desired blend of gasoline and ethanol such as E10, E15, E20, E85, etc.

While applications are being accepted from March 17th through May 21, 2010, grants will begin being awarded April 1 on a first-come-first serve basis with the last \$200,000 being awarded competitively.

These are one time stimulus dollars. Information can be found on-line at www.sdreadytowork.com/blender_pumps.aspx or contact Hunter Roberts, GOED 773-3301 or at Hunter.Roberts@state.sd.us.

Please share this with the filling stations in your communities.

"Grant Funds Awarded"

Fort Pierre



The City of Fort Pierre has been awarded \$7,500 of Outside the City of Deadwood Funds by the City of Deadwood for Cedar Hill Cemetery Survey/Monument System Project. The project will provide for surveying and marking the blocks, lots, and gravesites in this historic cemetery. The project will also involve \$2,000 of National Historic Preservation Grant Funds previously awarded by the National Trust for Historic Preservation Office, as well as local funds.

Pierre

Pierre has been awarded an additional \$100,000 of CDBG funds for the landfill remediation project. This brings the total CDBG dollars to \$512,000 and will enable the community to award a third contract for the project. The project is being completed in phases for ease of construction activities. CWSRF funds will also be involved in the project which is estimated to cost approximately \$1,233,300 before construction is completed in the fall of 2010.

Haakon County, Sully County and Hyde County

The counties of Haakon, Sully and Hyde Counties were notified that their Pre-Disaster Hazard Mitigation Planning Grants were awarded in the amounts of \$14,895, \$14,826 and \$11,972 respectively. These are 75/25 matching grants. The CSDED staff will be assisting these counties with the updating of their existing plans.

Hyde County

The county was awarded \$5,000 of ARRA (stimulus) funds from the SD Office of Homeland Security to assist with the purchase of a digital in-car video system (camera system).

District staff assisted with these applications. If you are interested in learning more about project financing options for projects, please contact the CSDED office.

Assistance to Firefighters Grant Program Training Scheduled

The Assistance to Firefighters Grant (AFG) Program will soon be upon us again and training workshops have been scheduled for April 8 at 7p.m.

at the Pierre Fire Department Station 1, 215 W Dakota, Pierre, and on April 9 at 7 p.m. at the Rapid Valley Fire Department, 5500 East Highway 44, Rapid City. Other workshops have been scheduled for the Martin Fire Department on April 10 and the Aberdeen First Station #2 on April 7. Registration is not necessary and workshops last approximately 2 hours.

The primary goal of the Assistance to Firefighters Grants (AFG) is to meet the firefighting and emergency response needs of fire departments and nonaffiliated emergency medical service organizations.

Deadlines for applications have not yet been made available so stay tuned to www.firegrantsupport.com. CSDED staff will assist fire and ambulance departments with their applications at no charge.



program.

They simply have to contact the office. While CSDED staff did not assist with the application, the Onida Fire Department was recently awarded \$12,350 under this

2010 Paint-South Dakota

Applications are being accepted by South Dakota Housing Development Authority (SDHDA) until April 9 for the Paint-South Dakota Campaign. 25 communities statewide will be given the opportunity to assist someone in need by painting their home. SDHDA provides the paint. Anyone interested in organizing a group of volunteers to paint can participate.



The Nominee must need their home repainted and would otherwise not be able to paint the house on their own due to financial or physical difficulty. The Nominee must also own and currently live in the home to be painted.

For a copy of the application contact Kelsey Baker at 773-7603 or go to the www.sdhda.org and go to community services or simply contact the District office at 773-2780.

Dates and Deadlines

April 2— Good Friday, CSDED Office Closed
9—Paint SD Applications Due
12 – Energy Loan Applications Due
20 & 21—Governor’s Economic Development Conference, Ramkota, Sioux Falls
30—Recreation Trails Grant Program Deadline

SDDENR Water, Sewer, and Storm Sewer Project Financing Application Deadlines:

- **Consolidated Water Facility Construction Grant Program**
Deadlines are the 1st day of April, July, October and January
- **Clean Water and Drinking Water SRF Loan Programs**
Deadlines are currently the 15th day of April, July, October and January

SDDENR Solid Waste Management Financing Program Deadlines are the 1st day of April, July, October and January.

Library Loan/Grant Funds Available

The Rural Development office currently has a dedicated source of money for public libraries—expansions, renovations, equipment, shelving, etc. While all communities in the District are not eligible for grant funds from Rural Development, there are loan funds at a very reasonable rate for your community or a combination of loan and grant funds. If your community has a library project you would like to undertake and would like information, please contact our office. Schools can also apply for these funds. This office is available to help with applications, and even if you get information from the Rural Development offices directly do not hesitate to contact us to assist with those applications. Assistance with applications of this type, when being applied for by a city or county, are currently part of the dues structure. The Pierre Rural Development Office serves all counties/cities in the District except Jackson and Haakon which are served by the Rapid City office.



Directors Notes!

For those who applied for Energy Efficiency Conservation Block Grant Projects it is hoped that you will hear something by the end of March. However, that is not a firm deadline. Please be patient as the state is reviewing the applications. There was approximately \$16 million in requests for the \$5.6 million available. District staff assisted 13 entities with applications involving 21 different projects and the requests totaled approximately \$3,429,000. Seth and Al largely worked on completing these applications.

District staff attended training in February on the Business and Industry Loan Guarantee Program available through Rural Development. Training was provided by Rural Development staff. While CSDED staff will not be involved in every aspect of an application, I believe we can have a role in completing environmental assessments for these business loans. This is a program where the SBDC, planning districts, lenders, etc. can work together to assist businesses in secure financing for new construction, equipment, expansion, working capital.

Heads up on the July 8 board meeting which will be held at the SDDOT Commission Meeting Room at 10 a.m. SDDOT staff will be reviewing the 2011-2105 “Tentative” Statewide Transportation Improvement Program (STIP).

Sustainable Communities are the buzz word these days from the Federal Level and applications will be due in June from a regional level for planning funds and implementation funds. The final product of a Sustainable Communities Planning will be a regional plan that identifies regional housing, transportation, economic development, land use, environmental, energy, green space and water infrastructure goals and priorities. This program is a joint effort of the US Departments of Housing and Urban Development, Transportation and Environmental Protection Agency.

There are also funding opportunities for implementation funding to support regions that have regional sustainable plans and implementation strategies in place. While I have been reviewing information on the programs, it appears that the program was designed for urban areas. The staff are reviewing options as to how we might be able to access these funds.

Finally, while the cancelation of board meeting is always a hard decision to make, sometimes it is necessary due to unforeseen circumstances and weather. Hopefully we had everyone contacted and no one made an unnecessary trip to Pierre for the meeting.



Have a safe and joyous Easter Season!

Presidential Disaster Declarations

On March 9, 2010 Presidential Disaster Declaration FEMA-1886-DR was declared for severe winter storms and snowstorm occurring December 23-27, 2009. Jones County is included in the declaration.

On March 10, 2010 Presidential Disaster FEMA-1887-DR was declared for severe winter storms and snowstorm occurring January 20-26, 2010. Counties in the CSDED area included in the declaration are Hughes, Hyde and Sully.

For both these declarations, assistance is being made available to state and eligible local governments and certain non-profits organizations for emergency work and the repair or replacement of disaster-damaged facilities. Direct public assistance from FEMA to private individuals and households has not been made available for either declaration.

Recreation Trail Funds Available.

Municipalities, counties, state parks agencies, non-profit civic organizations, tribal governments, schools, etc. are eligible to apply for Recreational Trails Program (RTP) grant funds from the SD Game, Fish and Parks. The application deadline is April 30. These applications require environmental documentation to be submitted with the application, as well as cost estimates, and documentation of control over any land to be improved/developed with RTP grant dollars. Do not wait until the last minute to get started with these applications.

The Recreational Trails Program provides up to 80 percent reimbursement for approved trail projects. Eligible projects include constructing new public trails, rehabilitating existing public trails, developing trail-related facilities, and educational programs that specifically address recreational trail issues.

Projects not eligible for funding include sidewalks, campgrounds, picnic facilities, playground equipment, roads, skateboard parks, promotional items, feasibility studies, etc.

RTP funds are federal dollars that are apportioned

to states by Congress to fund public motorized and non-motorized recreational trail projects. Application packets are available online at www.sdgifp.info/Publications. For more information contact Grants Coordinator Randy Kittle at 605.773.5490 or by e-mail at randy.kittle@state.sd.us. For assistance with the application please contact the CSDED office.

The Federal Hatch Act

Did you know that if one is a non-elected official working for a state or local unit of government and one works in connection with programs financed in whole or in part by federal loans or grants, the provisions of the Hatch Act might apply. The Hatch Act restricts the political activity of these individuals and they cannot be a candidate for public office in a partisan election.

An election is partisan if any of the candidates in the election are running as a representative of a political party whose presidential candidate received votes in the preceding election at which Presidential electors were selected.

Information can be found at the following web site: <http://www.osc.gov/hatchact.htm>



There are only 10 simple questions.

Travel Industry Economic Impact

Visitor spending in South Dakota in 2009 was approximately \$962.7 million, which is approximately 2.8% higher than 2007, according to a report entitled Statistical Update Economic and Fiscal Impacts Associated with the Vacation Travel Industry in South Dakota November 2008 through October 2009. The study was prepared by Dr. Michael Madden in January, 2010. This \$962.7 million in direct visitor spending results in a total state economic impact of about \$2,405,000,000 according to the study. According to Dr. Madden's report, "...Although nominal spending in current dollar terms statistically dropped by .4 percent in 2009, real inflation-adjusted spending actually increased by approximately 1.7 percent. Visitor spending is based upon a methodology related to lodging, food and beverages, attractions, and various retail spending. CSDED County data is listed below as taken from the study.

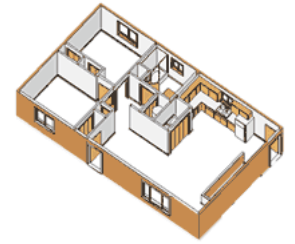
Estimated Total Visitor Sales Volume and Percent Change								
	Haakon	Hughes	Hyde	Jackson	Jones	Stanley	Sully	South Dakota
2002	\$ 767,005	\$ 13,795,291	\$ 315,572	\$ 6,955,203	\$ 5,704,126	\$ 2,207,621	\$ 2,238,514	\$ 662,860,933
2003	\$ 720,130	\$ 14,400,302	\$ 377,553	\$ 7,720,572	\$ 5,269,183	\$ 2,152,248	\$ 2,182,459	\$ 697,971,635
2004	\$ 557,556	\$ 15,920,099	\$ 352,054	\$ 8,253,541	\$ 5,563,007	\$ 2,307,688	\$ 2,082,398	\$ 752,200,454
2005	\$ 540,328	\$ 15,401,272	\$ 327,819	\$ 8,443,807	\$ 6,124,529	\$ 2,504,149	\$ 2,082,039	\$ 809,402,850
2006	\$ 613,717	\$ 15,348,527	\$ 378,284	\$ 8,466,879	\$ 5,930,296	\$ 2,808,871	\$ 2,157,189	\$ 864,855,345
2007	\$ 773,161	\$ 18,697,665	\$ 349,637	\$ 8,870,329	\$ 6,397,247	\$ 2,667,006	\$ 2,195,335	\$ 941,057,935
2008	\$ 728,232	\$ 25,093,423	\$ 262,271	\$ 8,797,026	\$ 6,740,599	\$ 4,679,547	\$ 2,659,641	\$ 967,028,692
2009	\$ 800,437	\$ 21,079,317	\$ 197,026	\$ 9,009,301	\$ 7,869,639	\$ 4,557,767	\$ 2,437,950	\$ 962,702,704
%Chg 2008- 2009	9.9%	-16%	-24.9%	2.4%	16.7%	-2.6%	-8.3%	-0.4%
% Ave Change 2002- 2009	.6%	7.5%	-5.4%	4.2%	5.4%	15.2%	-1.3%	6.5%

Hiring Season Employees---Remember the Fair Labor Standards Act (FLSA) establishes restrictions if hiring youth. Remember those under that age of 16 may not be employed for the operations of power driven machinery such as lawn mowers, golf carts, and garden equipment. This includes riding and push mowers and gas powered trimmers. Those under may not operate road construction or maintenance equipment. For a more detailed information go to www.dol.gov or look at the March issue of the SD Municipal League Magazine.

Smart Growth Implementation Assistance—Letters of intent are due April 9, for EPA's Smart Growth Program. This program provides free technical assistance to areas that want to implement smart growth practices and create sustainable communities. Selected applicants will receive assistance in the form of a multi-day visit by a team of experts organized by EPA. Smart Growth Principles include: mixed land uses, compact building design, housing opportunities and choices, creating walkable neighborhoods, preservation of farmland and open spaces, provide a variety of transportation choices, etc. Development of practices that support national environmental and public health goals that minimize water quality impacts from development, reduce greenhouse gas emissions and other air pollution through more compact development and better transportation options, promote equitable development encourage clean-up and sustainable redevelopment of brownfields. Topics of interest for this year's solutions include: Climate Change, Financing and Planning Infrastructure Investments; Hazard Mitigations Plans (keeping future growth out of flood prone areas), Transportation solutions for rural communities, plus others. If interested please contact the CSDED office—instead of competing applications from several areas perhaps one can be submitted for the region.

Governor's House Program

The Governor's House Program has been in existence since 1996 and through the end of 2009, 65 homes have been acquired by individuals/households in the CSDED's seven county area. Houses are available for purchase by private individuals as their primary residents and by non-profits/municipalities. This 2-bedroom, 1 bath home 1,008 square feet energy efficient home comes complete with kitchen cupboards, bathroom fixtures, a furnace, hot water heater, and washer and dryer hook-ups. The house does not come with appliances or floor coverings.



Purchaser is responsible for financing the house like any other house one might purchase. The purchaser is responsible for all costs including house, lot/land, foundation/basement, floor coverings, appliances, entrance steps, utility connections and hook-up fees, building permit, sidewalks, driveway, and curb and gutter as applicable.

INCOME QUALIFICATIONS APPLY!

To learn more about the Governor's House Program or if you know of someone who might want to purchase the home, please have them contact Marlene at the CSDED Office at 773-2782 or go to the District website at www.csded.org.

House layout from SDHDA website

CSDED Officers/Executive Committee

Vikki, Day, Chairman, Highmore
 Bill Abernathy, Vice-Chairman, Pierre
 David Page, Sec/Treasurer, Fort Pierre
 David Neuharth, Stanley County
 Monte Anker, Jones County

CSDED Staff

Marlene Knutson, Executive Director
 605-773-2782
mknutson@csded.org

Al Haugen, Planner
 605-773-2785
luke@csded.org

Seth Hyberger, Planner
 605-773-2781
seth@csded.org

Central South Dakota



Enhancement District

PO Box 220
 3431 Airport Road, Suite 3
 Pierre, South Dakota 57501